

CERTIFICATE OF LOCATION OF GOVERNMENT CORNER

North Quarter Corner of Section 32, Township 108, Range 43, 5th P.M.

STATE OF MINNESOTA, County of Murray

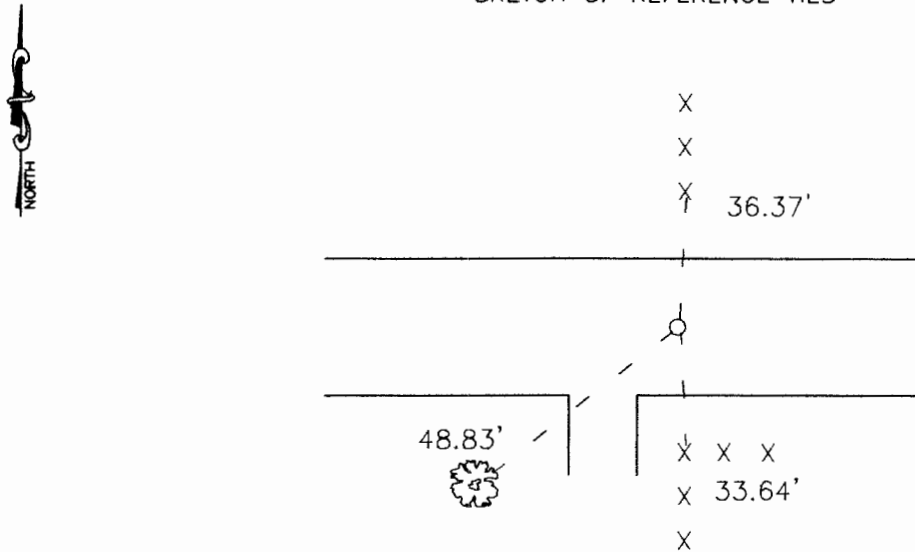
At the corner location shown on the sketch:

On 11-20-01 found a Nothing
DATE

left monument as found, lowered monument, removed monument (explain)

On 11-20-01 placed a 1" pipe w/seal
DATE

SKETCH OF REFERENCE TIES



Nail and seal in top of wooden fence post South-Southeast 33.64'

Nail and seal in top end post North 36.37'

Nail and seal in 30" tree Southwest 48.83'

Statement of evidence relative to this corner location is on back of page.

I hereby certify that this document and the data contained herein was prepared by me or under my direct supervision.

[Signature] 11-28-01
SIGNATURE DATE

Registration No. 11943

- Land Surveyor, Professional Engineer
- County Surveyor, County Engineer

OFFICE OF THE COUNTY RECORDER

DEC 27 2001

County of _____

I hereby certify that this document was filed in the Co. Recorders office at _____ M on the _____ day of _____ A.D. 19 _____

County Recorder _____

By _____, Deputy

DOCUMENT NO. _____

Statement of Evidence

The original survey was done by J.W. Bishop in 1866.

On November 20, 2001 Moseng Land Surveying dug a 4'x5' 3' deep hole. We probed down 3' and found nothing. We tried setting the corner midway and on line, but line fell 2' south of the centerline and 2' west of North-South fence lines. We set a 1" pipe w/seal #11943, 33' North of the fence to the South and in line with North-South fences.